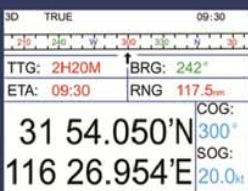
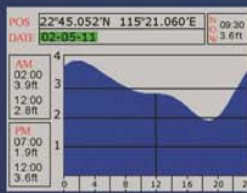
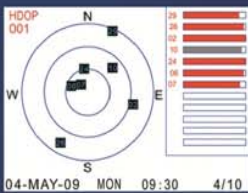


ONWA[®]

6" TFT-LCD GPS CHART PLOTTER

MODEL KP-6288

User SD-card
C-MAP MAX Compatiable



- High resolution TFT day-view LCD display
- SD-card slot for C-Map MAX and user data
- Tide table
- Versatile display mode include
 - Plotter screen
 - Highway screen
 - Nav. data
 - Satellite information
- GOTO track navigation
- Map orientation select
- Proximity waypoints alarms
- Palette
 - Normal
 - Daylight - exposed to sunlight
 - Night - in dark environment
 - NOAA- paper chart colors

SPECIFICATION OF KP-6288

PLOTTER CHARACTERISTICS

Waypoints/icons:	15,000 waypoints with name, symbol, depth and water symbols, 10 proximity
Routes:	30 reversible routes with up to 200 points each, plus MOB and Track Navigation or Goto Track modes
Tracks:	30,000 point automatic track log; 15 saved track (up to 2000 track points each) let you retrace your path in both directions
Alarms:	XTE, Anchor drag, arrival, speed, voltage, proximity waypoint and time
Palette:	Normal Daylight exposed to sunlight Night in dark environment NOAA paperchart colors
Tides:	Tide data
Projection:	Mercator projection
Position format:	Lat/Lon
External SD Cards:	SD Cards slot for C-Map MAX and User SD memory card
Plot Interval:	1s to 99h or 0.01 nm to 9.99nm
Plotting scales:	0.06nm to 1000nm
Nav Datat:	Inputs: \$--BWC, \$--BWR, \$--DBT, \$--DPT, \$--GGA, \$--GLL, \$--HDG, \$--HDM, \$--HDT, \$--MDA, \$--MTW, \$--RMA, \$--RMB, \$--RMC, \$--TLL, \$--TTM, \$--VDR, \$--VHW, \$--VTG, \$--WPL, \$--ZDA Outputs: \$--AAM, \$--APB, \$--BOD, \$--BWC, \$--GGA, \$--GLL, \$--RMB, \$--RMC, \$--VTG

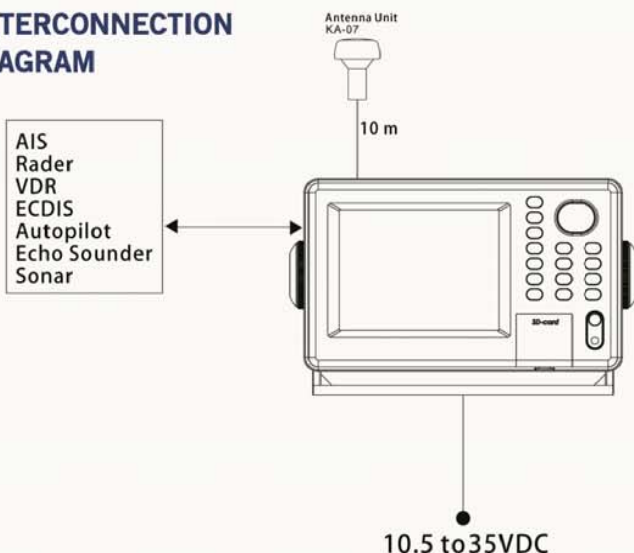
Power Supply

Power Supply:	10.5 to 35VDC
Current drain:	0.3 A at 12V ; 0.16 at 24V

Physical

Size:	28mm(H)X138mm(W)X79mm(D)
Weight:	0.9kg
Display:	5.6-inches ColorTFT day-viewLCD 320 X 234 pixels
Waterproofing:	Display unit: IPX5 Antenna unit: IPX6
Temperature range:	Display unit: -15. Cto +55. C Antenna unit: -25. Cto +70. C

INTERCONNECTION DIAGRAM



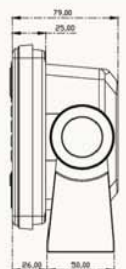
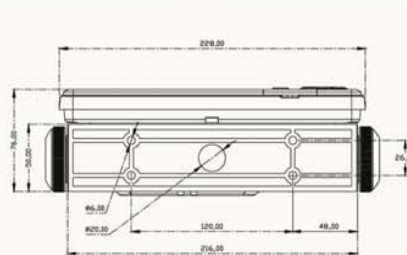
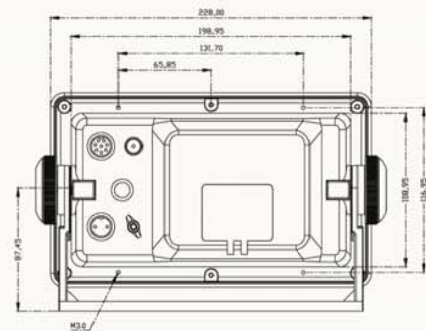
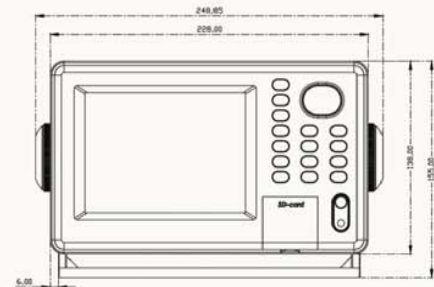
GPS RECEIVER CHARACTERISTICS

Receiver:	12 parallel channel GPS receiver continuously Tracks and uses up to 12 satellites to compute and update your position
Acquisition times:	Cold start: 60 seconds average Warm start: 45 seconds average Hot start: 15 seconds average
Update rate:	1/second, continuous
Accuracy:	Position: <15 meters(95%) without S/A Velocity: 0.1 Meter/sec without S/A Time: ± 100ns synchronized to GPS time
Dynamics:	Altitude: 18,000m Max Velocity: 500 m/s Acceleration: 4g Max
Datum:	WGS 84
Interfaces:	NMEA-0183 input and output
Antenna:	KA07

EQUIPMENT LIST

- Standard
1. Display unit
 2. Antenna unit with 10m cable
 3. Operator manual
 4. Installation materials and standard spare parts

DISPLAY UNIT



ANTENNA UNIT

